



MONTHLY MEMBERSHIP PROGRESS REPORT

District 323E2

Results as of: 3/31/2016

GMT: KAMLESH JAIN

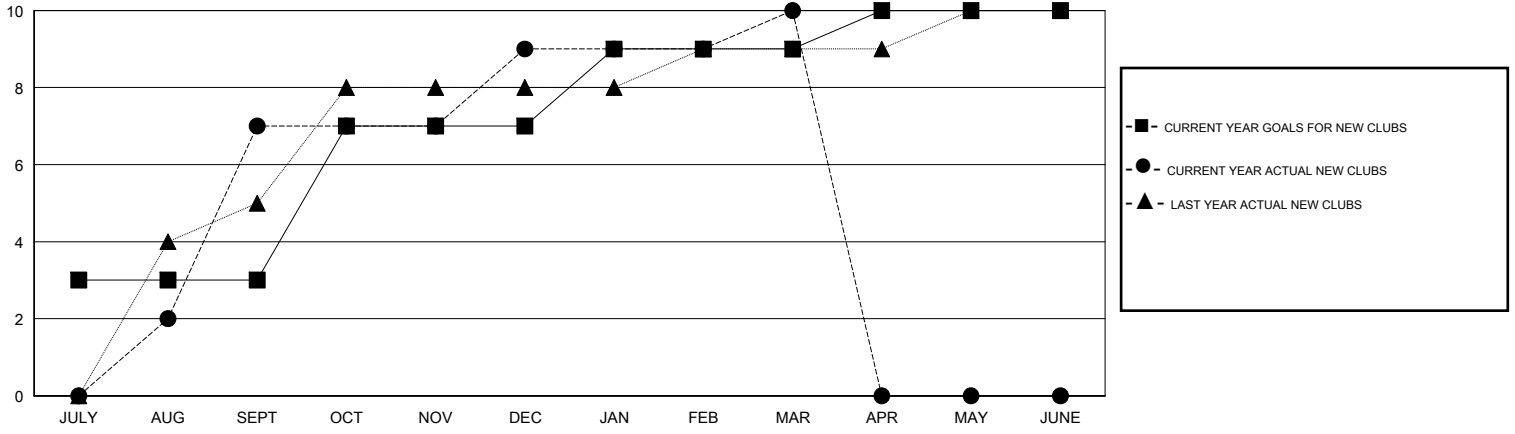
LOCATION INDIA

GMT CA 6

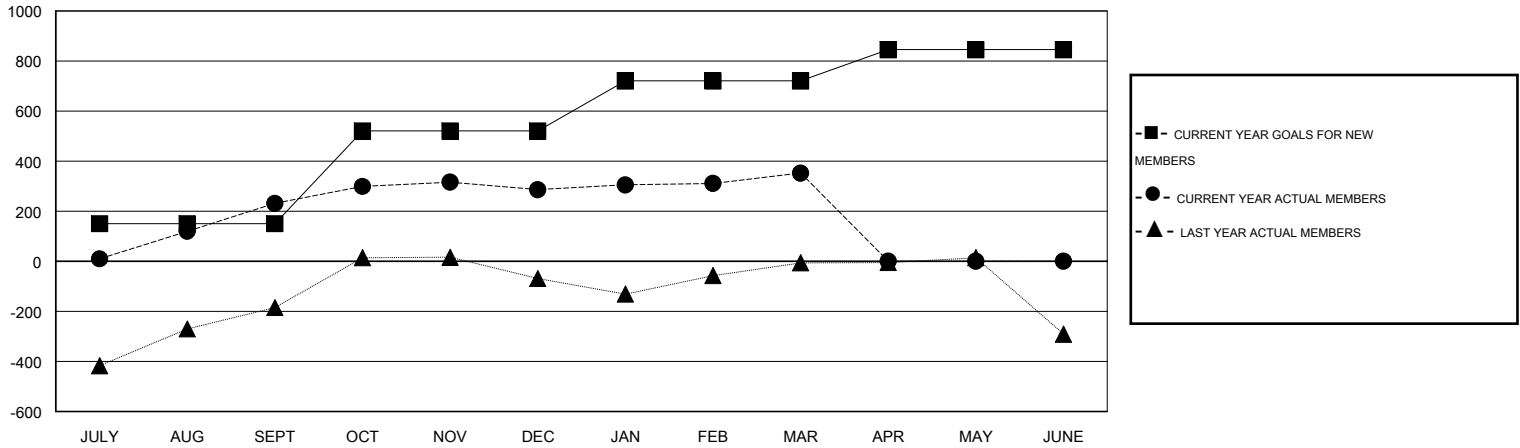
Clubs				
RESULTS FOR 2015-2016				
QUARTER	NEW CLUB GOAL	NEW CLUBS	DROPPED CLUBS	NET GAIN/LOSS
JULY/AUG/SEPT	3	7	1	6
OCT/NOV/DEC	4	2	1	1
JAN/FEB/MAR	2	1	1	0
APR/MAY/JUNE	1	0	0	0

Members				
RESULTS FOR 2015-2016				
QUARTER	NEW MEMBER GOAL	CHARTER AND NEW MEMBERS ADDED	DROPPED MEMBERS	NET GAIN/LOSS
JULY/AUG/SEPT	150	399	168	231
OCT/NOV/DEC	370	218	163	55
JAN/FEB/MAR	200	150	84	66
APR/MAY/JUNE	125	0	0	0

GOALS AND ACTUAL NEW CLUBS CUMULATIVE



GOALS AND ACTUAL MEMBERS CUMULATIVE



DROPPED CLUBS: 3

84 CLUBS OF 141 ADDED 1 OR MORE NEW MEMBERS

GENDER DISTRIBUTION	
MALE	4,788 (83.57%)
FEMALE	941 (16.43%)

DROPPED MEMBERS	
DECEASED	11
CLUB CANCELLED	48
OTHER	355
TOTAL	414

[CLICK HERE FOR HEALTH ASSESSMENT DATA](#)

FAMILY UNIT MEMBERS	1,520
HEAD OF HOUSEHOLD	716
NON-HEAD OF HOUSEHOLD	804